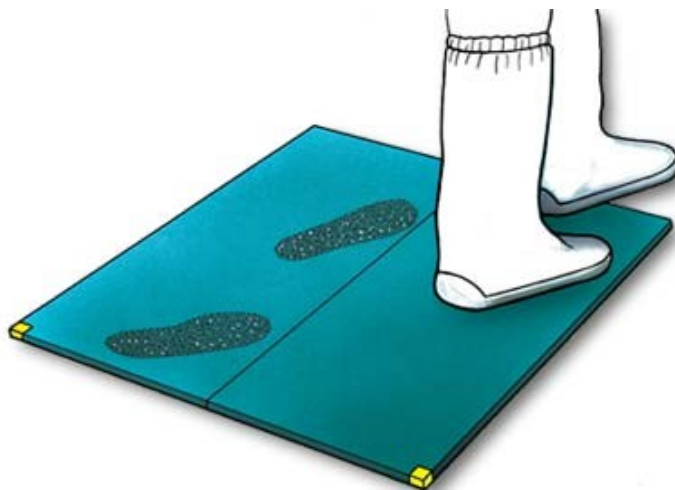


**PEELABLE ENTRANCE MATS**

STA peelable mats have been designed to minimize the particulate carried in under the soles or on the cart wheels entering the cleanroom. Placed at the entrance of the room, the adhesive traps all particles from soles or from the wheels leaving no residue. Each mat block is composed of 30 adhesive removable sheets. Used (numbered) mats are progressively peeled off to leave new clean ones. Each package includes 8 units for a total of 240 sheets



- Art. STA 09045** size 900 x 450mm
- Art. STA 11545** size 1150 X 450mm
- Art. STA 11565** size 1150 x 650mm
- Art. STA 11590** size 1150 x 900mm

**WASHABLE ENTRANCE MATS**

Totally adhesive free the dust and the residues are effectively trapped by the mat from the soles of the operator. Very effective with foot borne or trolleys particulate, STA BLUEMAT is electrostatically neutral and does not generate charges during traffic passages. 2,5mm thickness



**HI-GRADE TYPE**

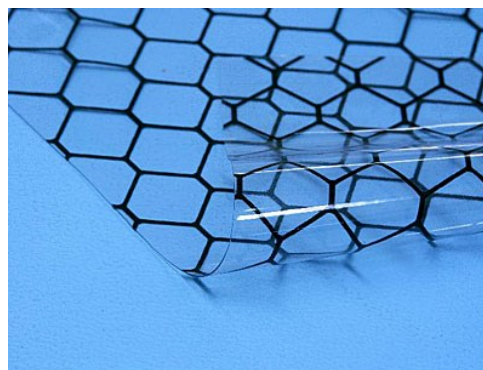
- STA BLUEMAT EL 066115** 660x1150mm
- STA BLUEMAT EL 066115 B** 660x1150mm+frame
- STA BLUEMAT EL 060090** 600x900mm
- STA BLUEMAT EL 060090 B** 600x900mm+frame
- STA BLUEMAT EL 045115** 450x1150mm
- STA BLUEMAT EL 045115 B** 450x1150mm+frame
- STA BLUEMAT EL 045090** 450x900mm
- STA BLUEMAT EL 045090 B** 450x900mm+frame

**ECONOMIC TYPE**

- STA BLUEMAT ECO 6045** 600x450mmx3mm
- STA BLUEMAT ECO 6090** 600x900mmx3mm

**ESD TRANSPARENT GRID CURTAIN ROLL**

**Art. 9260**  
 Transparent ESD vinyl alveolate film  
 Material : PVC  
 Surface resistivity / front side : 10exp4 – exp8 Ohms  
 Surface resistivity / back side : 10exp10 Ohms  
 Size: W137 cm x L 30M x T 0.3mm  
 Gross weight (roll): 16kgs/Roll



**ESD TRANSPARENT SELF ADHESIVE FILM**

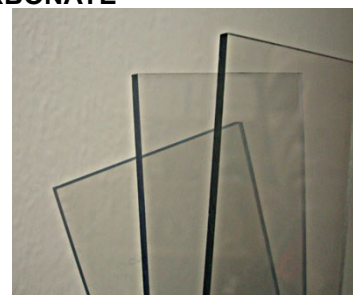
**Art. 9282**  
 ESD self adhesive transparent foil, rolls 20m, available in heights 1000 and 500mm



**TRANSPARENT ESD PANELS, (size 2x1m)**

Rigid panels to be used where transparency, non contamination and ESD are required.

- Art. AS PANEL PMMA**
- Art. AS PANEL PVC**
- Art. AS PANEL POLYCARBONATE**



## CLEANROOM GLOVES

### HIGH TEMPERATURE GLOVES

#### Art. 59G

Withstand dry high temperatures (range  $-134$  to  $+537^{\circ}\text{C}$ ),  
 No asbestos or fiberglass  
 Packed in class 100 (ISO5)  
 Single bags each pair.  
 Sizes L-XL



### EXTREME HIGH TEMPERATURE GLOVES

#### Art. 50G

Withstand dry high temperatures (range  $-210$  to  $+760^{\circ}\text{C}$ ),  
 ESD protection  $10^{**}9\text{Ohm}$   
 No asbestos or fiberglass  
 Packed in class 100 (ISO5)  
 Single bags each pair.  
 Sizes M-XL



### HIGH TEMPERATURE GLOVES FOR WET CONTACT

#### Art. 70G

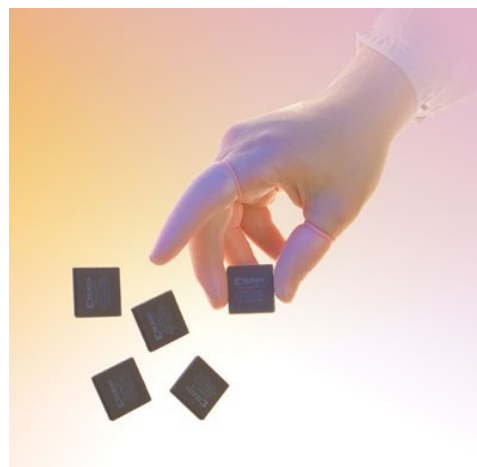
Packaged for ISO 5 ( Class 100).  
 Wet or dry contact temperatures from  $-61.4^{\circ}\text{C}$  to  $232^{\circ}\text{C}$   
 PolyTuff silicone elastomer is sulfur-free. Excellent resistance to  
 chemicals, solder and fluxes.  
 Size: Hand Specific -M, L, XL  
 Pack: 1 Pair/Poly Bag.



### BLUE NITRILE GLOVES

#### Art. BQF09

3 times more resistant than latex or vinyl,  
 Naturally Anti-static, surface resistance 109 ohms.  
 Geogrip 360sm fully textured fingers and palms.  
 Meets ASTM D6319.  
 Size: XS- XXL, Ambi.  
 Pack: 100 Gloves/Dispenser Box.



### ANTISTATIC FINGER COTS

#### Art. 650G

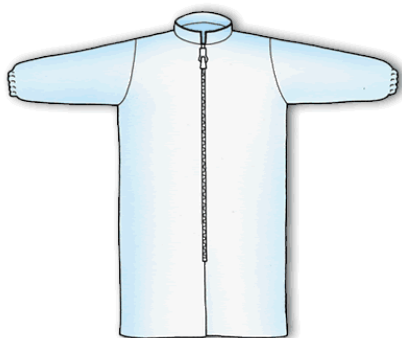
Packaged for ISO 5 (Class 100) applications. Average surface resistance of  $5 \times 10^{12}$  ohms per square unit.  
 For use with Class II static sensitive devices (thresholds above 1000V).  
 Packaged in gas-impermeable film flushed with semiconductor grade N2.  
 Size: S-XXL

## DISPOSABLE CLEANROOM CLOTHES

Disposable clothing ensures always clean garments to the cleanroom operators. Each part is supplied in a controlled clean packaging. The materials used are typically Tyveck, Polyethylene and Polypropilene.



Shirt collar



Round collar



- Art. 7410** unisex low-static poly propilene sms 3-Layers coats, mao collar, pack of 25 units
- Art. 7420** unisex low static poly propilene sms 3-Layers coats, shirt collar, pack of 25 units
- Art. 9410** unisex ESD Tyveck coats, mao collar, pack of 25 units
- Art. 9420** unisex ESD Tyveck coats, shirt collar, pack of 25 units
- Art. 8420** unisex PLP coat, shirt collar, snaps, packs of 50 units
- Art. 9712** TNT elastic bouffant cap 60cm dia.
- Art. 9713/9714** polyester ESD caps for man and woman
- Art. 9862** clean face mask with elastics



Bouffant cap



Face mask



ESD cap

## ESD CLEANROOM POLYESTER CLOTHES

- Art. 3410** unisex ESD polyester coats, grid conductive pattern.
- Art. 3420** unisex ESD polyester coats, stripe conductive pattern.



SIZE (cm)	S	M	L	XL	2XL	3XL	4XL	5XL
LENGHT	88,5	100,5	101,5	103,5	105,5	107	108,5	110,5
CHEST	114	124	130	136	145	153	160	169
SLEEVE	75,5	77,5	80	82	85	88	90	92



## CLEANROOM CLOGS

### Art. CLEANCLOG

Made with thermoplastics, may be washed in machine at 90° C and tumble washing with sterilization at 135° C—on request available with back heel belt



## CLEAN ROOM COVERSHOES

**Art. ESD CLEAN COVERSHOES** Polypropilene elasticated covershoes with conductive strip

**Art. ESD CLEAN COVERSHOES TYVECK** Tyveck ESD covershoes



ESD covershoes with strip



**Art. CLEAN COVERSHOES CPE** Polyethylene covershoes

**Art. HOOK ESD COVERSHOES** Polypropilene elasticated ESD covershoes with conductive strip and hooks for dispenser box

**Art. HOOK COVERSHOES BOX** Floor dispenser box for HOOK ESD COVERSHOES



## CLEANROOM BOOTS

### Art. 9910

Cleanroom footwears, zip closure, polyester grid fabric, shoe in PVC

### Art. 9911

Cleanroom footwears, zip closure, polyester grid fabric, PU sole, PVC vamp

